



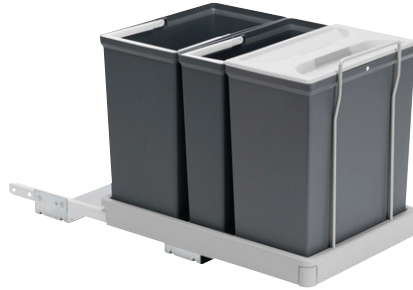
SELECT 2.3.4

Our classic cabinet solution

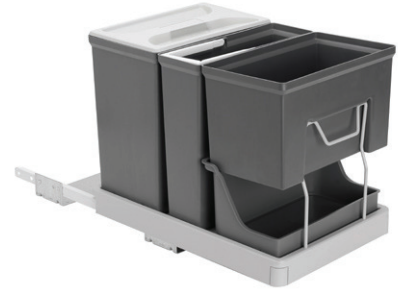
SELECT 2, 3 and 4 system has been a part of our range for many years now. This solution has become very popular and is sold all over Europe. It is a cabinet solution that is easy to install and has a flexible bin layout. It can be installed for both left and right handed units. Automatic opening mechanism is optional.



SELECT 2



SELECT 3



SELECT 4

MEASUREMENTS

	Depth	Width	Height
SELECT 2	460 mm	315 mm	356 mm
SELECT 3	460 mm	315 mm	356 mm
SELECT 4	460 mm	315 mm	356 mm

NB! Kapi minimaalne laius 400mm!

AVAILABLE COLOURS



Grey

OPTION FOR OPENING



Swing Out Arm